

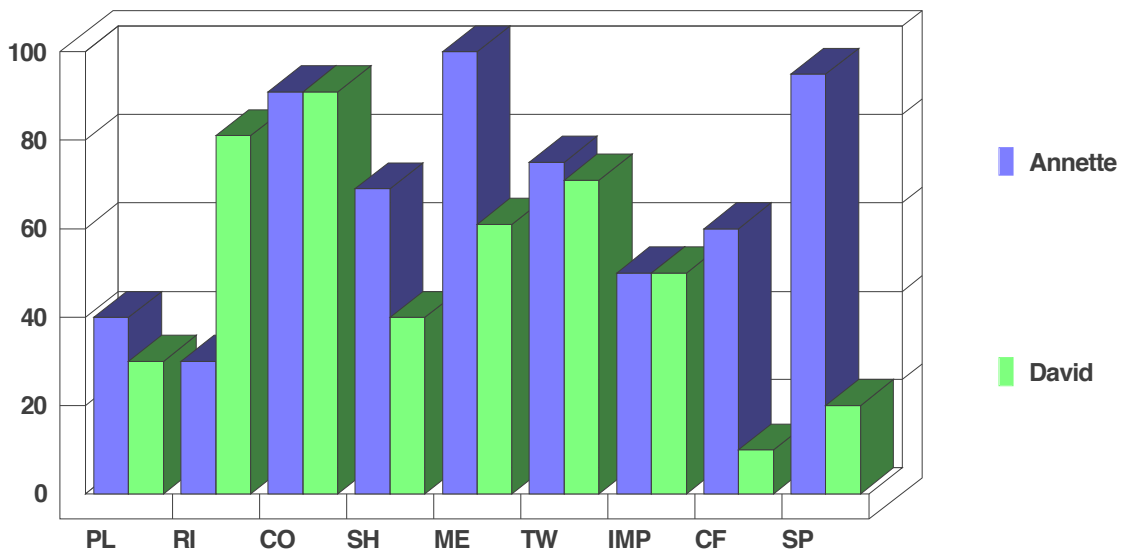
BELBIN

CANDIDATES' WORKING RELATIONSHIPS

First: Annette, ACME Plastics
Second: David, ACME Plastics

Annette is a colleague of David.

Please note that large differences in personal calibre, or strongly held viewpoints, may over-ride any of these forecasts based on team role chemistry.



A relationship which offers promise in issues of determining strategy and policies provided Annette's thought and logic is given a sense of direction by David.